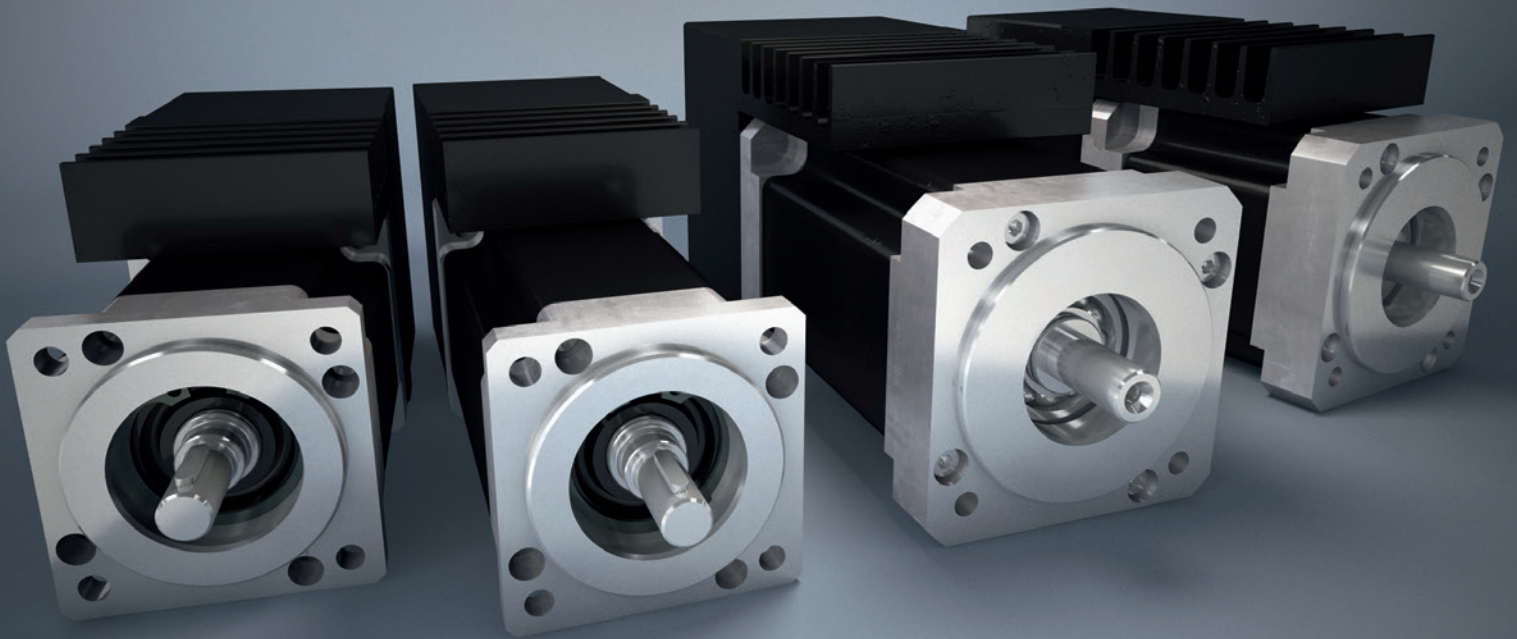


Volume reduced

Baumüller expands its range of sizes of three-phase synchronous motors DSDI 36 and 28 with integrated electronics



CANopen

PROFI[®]
BUS

With even smaller options for the compact drives which allow for a further reduction of the fitting space, Baumüller paves the way for new machine designs. The DSDI is a highly dynamic servo drive for applications with high demands on compactness as well as acceleration capacity and best start-stop characteristics.



be in motion


BAUMÜLLER

www.baumueller.com

Baumüller extends the power range of the three-phase synchronous motors with integrated electronics DSDI 028/036 by absolute rotary encoders

- © Usable at supply voltages from 9 to 60 VDC
- © Selectable operating modes:
 - Positioning control (scanning time 2000 ms) with 4096 position values per revolution (without absolute rotary encoder in the standard configuration)
 - 4Q speed control (scanning time 250 ms)
 - Current control (scanning time 125 ms)
- © Integrated electronics features protective overvoltage, undervoltage, and overtemperature monitoring functions
- © Integrated MPU (Motion Process Unit) freely programmable up to 1500 lines in Python script
- © 5 digital inputs, 2 digital outputs, and 1 analog input available
- © Input/output programming through MPU enables the following functionalities:
 - PLC
 - Brake actuation,
 - Analog set value setting
 - Selectable homing modes
- © Pluggable electrical connections
- © Integration into a control structure by:
 - Connection via field buses CANopen and PROFIBUS
 - Programming sequence actuation via digital I/Os
 - Analog set value setting ± 10 V
 - Or communication via an USB interface of a notebook (virtual COM port)
- © Integrated electronics options: CAN adapter, USB for parameterization and programming, external ballast module with integrated ballast resistor
- © Motor options: Degree of protection IP65, brake, gearing
- © Option extensions: Optical, absolute rotary encoders (selectable resolutions 12, 13, 14, 17 bit ST).
Optical, absolute rotary encoders with multiturn gearing (selectable resolutions 13 bit ST + 12 bit MT or 17 bit ST + 12 bit MT)

Technical data

Example for supply voltage 48VDC

	DSDI-028S	DSDI-036S
U _{zk} [VDC]	24	48
n _N [min ⁻¹]	3000	3000
P _N [W]	95	220
M _N [Nm]	0,33	0.7
I _N [A]	5,5	5.5

04/2016

Subject to change.




BAUMÜLLER

be in motion

www.baumueller.com